

2023

**Keio University
Annual Report
on Research Activities**

Research funds at Keio University from national and local public institutions, private businesses, and university funding totaled approximately 28.8 billion yen in FY2023. The charts below show research fund totals classified in various ways.

Research Funds by Type

In thousands of yen

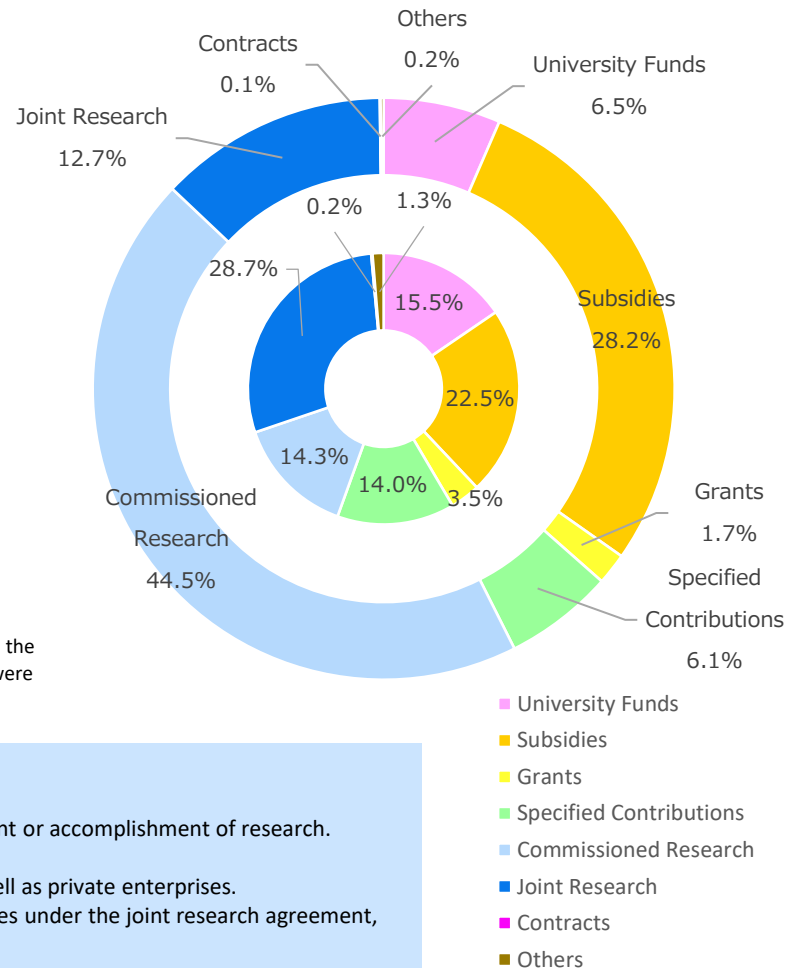
Types of Funds	Number of Projects	Amount
University Funds	799	1,873,997
Subsidies	1,162	8,132,403
Grants	184	503,886
Specified Contributions	723	1,745,945
Commissioned Research	737	12,803,227
Joint Research	1,484	3,664,688
Contracts	8	12,345
Others	68	48,459
Total	5,164	28,784,950

*As of March 31, 2024

*Discrepancies may arise in the total amount as totals are rounded to the thousand.

*Each year, the data is identical to the "Research Funding Data by Type of Research Funds" published in the "慶應義塾の活動と財務状況(事業報告書)". However, in FY2023, some errors in the statistical data were discovered after the publication of that report, and the corrected data are used in this document.

Amount <outer ring> and Number of Projects <inner ring>



Definition

Subsidies: Research funds provided mainly by government and public offices.

Grants: Research expenses provided mainly by foundations for the purpose of improvement or accomplishment of research.

Specified Contributions: Contributions earmarked for research activities.

Commissioned Research: Research commissioned by government and public offices, as well as private enterprises.

Joint Research: Research involving personnel exchanges and/or sharing technology/facilities under the joint research agreement, with or without payment of research funds.

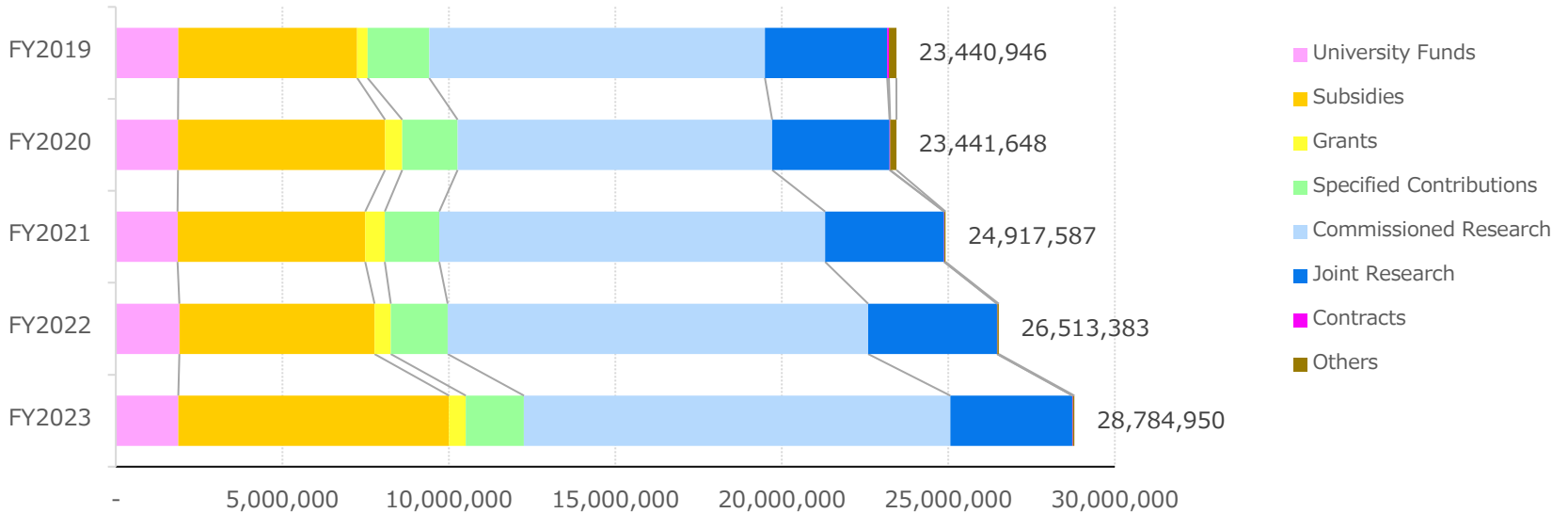
Contracts: Research under a contract agreement.

Research Funds by Type FY2019-2023

Research Funds by Type over the Past 5 Years

In thousands of yen

Type of Research Funds	FY2019	FY2020	FY2021	FY2022	FY2023
University Funds	1,872,464	1,869,698	1,853,915	1,908,939	1,873,997
Subsidies	5,375,974	6,215,436	5,634,966	5,864,786	8,132,403
Grants	311,603	518,482	590,527	484,144	503,886
Specified Contributions	1,851,529	1,663,903	1,632,669	1,705,714	1,745,945
Commissioned Research	10,081,073	9,439,647	11,589,559	12,634,009	12,803,227
Joint Research	3,672,466	3,530,078	3,570,030	3,865,362	3,664,688
Contracts	50,197	16,267	12,561	9,946	12,345
Others	225,640	188,137	33,360	40,483	48,459
Total	23,440,946	23,441,648	24,917,587	26,513,383	28,784,950



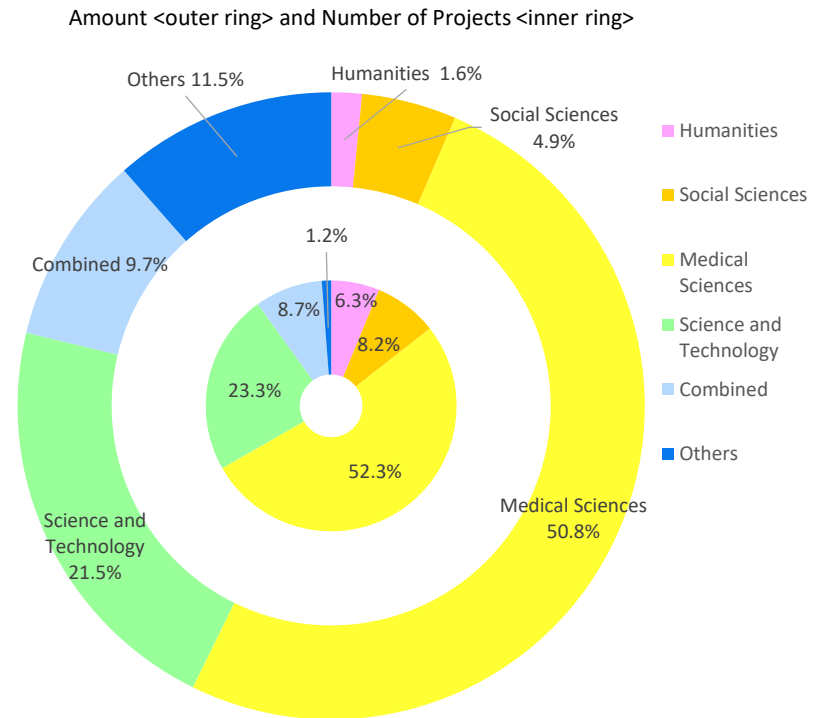
* University funds were revalued in 2018, part of which were not counted as such in the previous years.

The data in this section are compiled with reference to classification of the field of research in other official reports such as the Survey of Research and Development by the Ministry of Internal Affairs and Communications.

Research Funds by Field

In thousands of yen

Research Fields	Number of Projects	Amount
Humanities	322	454,440
Social Sciences	423	1,407,826
Medical Sciences	2,701	14,623,340
Science and Technology	1,205	6,182,277
Combined	451	2,810,367
Others	62	3,306,700
Total	5,164	28,784,950



- Humanities**
History, Philosophy, Literature, Languages, and other humanities.
- Social Sciences**
Economics, Sociology, Business and Commerce, Political Science, Law, and other social sciences.
- Medical Sciences**
Medicine, Nursing, Pharmaceutical Science, and other health and medical sciences.
- Science and Technology**
Applied Chemistry, Chemistry, Mechanics and Shipbuilding, Engineering, Mathematics, Electrics, Communications, Physics, and other sciences and technology.
- Combined**
Interdisciplinary fields.
- Others**

Classifying funds by affiliation of researcher (in principle, the representative researcher)

■ Research Funds by Affiliation of Researchers

In thousands of yen

Affiliation of Researchers	Number of Projects	Amount
Faculty / Graduate School of Letters	158	288,649
Faculty / Graduate School of Economics	166	420,000
Faculty / Graduate School of Law	96	215,902
Faculty / Graduate School of Business and Commerce	115	264,323
Faculty / Graduate School of Medicine	2,314	13,338,386
Faculty / Graduate School of Science and Technology	1,073	4,392,139
Faculty of Policy Management	140	542,182
Faculty of Environment and Information Studies	323	1,381,271
Faculty of Nursing and Medical Care	56	72,887
Faculty of Pharmacy / Graduate School of Pharmaceutical Sciences	246	839,174
Graduate School of Human Relations	-	0
Graduate School of Media and Governance	87	1,573,179
Graduate School of Health Management	10	18,410
Graduate School of Business Administration	28	26,550
Graduate School of System Design and Management	60	389,582
Graduate School of Media Design	32	605,197
Law School	34	72,192
Others	226	4,344,927
Total	5,164	28,784,950

*Discrepancies may arise in the total amount as totals are rounded to the thousand.

Types of External Entities Contributing Research Funds

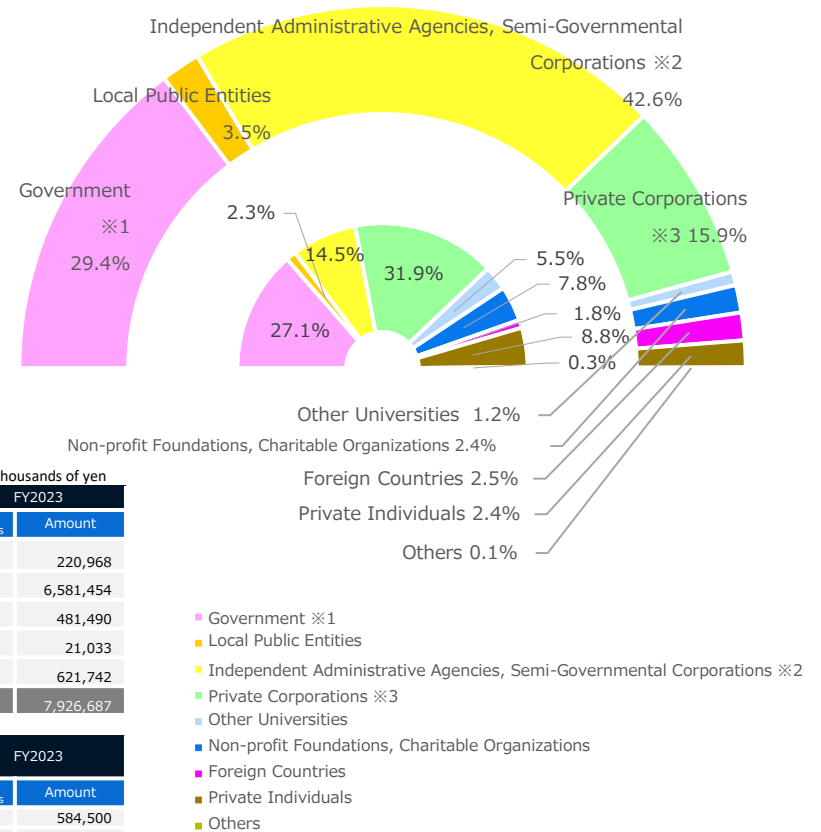
In thousands of yen

Type of External Entities	Number of Projects	Amount
Government ※1	1,184	7,926,687
Local Public Entities	99	943,664
Independent Administrative Agencies, Semi-Governmental Corporations ※2	635	11,457,687
Private Corporations ※3	1,394	4,270,981
Other Universities	238	327,610
Non-profit Foundations, Charitable Organizations	342	658,936
Foreign Countries	78	662,484
Private Individuals	382	640,141
Others	13	22,763
Total	4,365	26,910,953

* Excluding university funds

Contribution Share by External Entity Type

Amount <outer ring> and Number of Projects <inner ring>



※1 National Institute of Information and Communications Technology
 ※2 Japan Science and Technology Agency
 ※3 Japan Agency for Medical Research and Development
 ※d New Energy and Industrial Technology Development Organization

1

Government	FY2019		FY2020		FY2021		FY2022		FY2023	
	No. of Projects	Amount	No. of Projects	Amount	No. of Projects	Amount	No. of Projects	Amount	No. of Projects	Amount
Funding sources										
Ministry of Internal Affairs and Communications	6	75,228	9	155,467	7	154,589	7	223,188	5	220,968
Ministry of Education	1,211	3,964,900	1,282	4,531,800	1,180	4,208,803	1,113	4,693,928	1,069	6,581,454
Ministry of Health, Labor and Welfare	92	479,067	111	696,285	103	582,271	103	573,540	82	481,490
Ministry of Environment	3	71,129	8	209,857	2	94,433	1	10,810	2	21,033
Others	20	559,043	17	340,530	15	369,813	17	63,160	26	621,742
Total	1,332	5,149,367	1,427	5,933,939	1,307	5,409,909	1,241	5,564,626	1,184	7,926,687

2

Independent Administrative Agencies, Semi-Governmental Corporations	FY2019		FY2020		FY2021		FY2022		FY2023	
	No. of Projects	Amount	No. of Projects	Amount	No. of Projects	Amount	No. of Projects	Amount	No. of Projects	Amount
Funding sources										
NICT *a	14	61,536	23	86,793	19	99,028	23	706,928	17	584,500
JST *b	89	1,959,885	101	1,420,516	136	2,848,017	164	3,053,826	161	4,120,748
AMED *c	248	5,420,979	254	5,705,963	274	6,253,193	270	5,930,426	247	5,789,967
NEDO *d	20	424,577	22	309,866	25	384,515	24	435,923	23	469,375
Others	148	759,532	138	536,168	192	717,582	182	1,023,990	187	493,097
Total	519	8,626,509	538	8,059,306	646	10,302,335	663	11,151,093	635	11,457,687

3

Private Corporations	FY2019		FY2020		FY2021		FY2022		FY2023	
	No. of Projects	Amount	No. of Projects	Amount	No. of Projects	Amount	No. of Projects	Amount	No. of Projects	Amount
Funding sources										
Specified Contributions	674	1,250,149	638	1,085,902	531	1,091,311	458	853,284	299	574,757
Commissioned Research	153	418,786	130	411,277	166	547,987	149	770,059	159	665,809
Joint Research	961	3,285,761	984	3,244,088	1,006	3,311,024	936	3,381,639	870	2,955,203
Others	141	639,384	134	496,568	81	106,929	83	97,220	66	75,212
Total	1,929	5,594,080	1,886	5,237,835	1,784	5,057,251	1,626	5,102,202	1,394	4,270,981

■ Types of External Entities Contributing Research Funds to Each Campus

In thousands of yen

Campuses		Government Organizations	Non-Government Public Organizations	Private Corporations	Others	Total
Mita Campus	No. of Projects	205	7	34	4	250
	Amount	2,872,026	11,063	160,337	196,493	3,239,919
Hiyoshi Campus	No. of Projects	135	15	66	6	223
	Amount	650,347	44,376	385,747	93,801	1,174,271
Shinanomachi Campus	No. of Projects	810	334	593	441	2,178
	Amount	9,071,094	445,422	2,114,346	751,633	12,382,495
Yagami Campus	No. of Projects	400	103	365	56	923
	Amount	3,489,805	175,424	801,372	54,984	4,521,585
Shonan Fujisawa Campus	No. of Projects	140	80	242	56	517
	Amount	1,818,448	166,791	579,085	219,971	2,784,295
Shiba-Kyoritsu Campus	No. of Projects	99	28	54	3	184
	Amount	595,745	74,899	73,238	250	744,132
Shin-Kawasaki Town Campus	No. of Projects	2	4	16	0	22
	Amount	180,700	6,596	72,371	0	259,667
Tsuruoka Town Campus	No. of Projects	26	9	18	3	56
	Amount	243,627	716,399	22,525	2,704	985,255
Tonomachi Town Campus	No. of Projects	3	2	6	2	13
	Amount	462,582	21,000	61,961	273,791	819,334
Total	No. of Projects	1,819	581	1,394	571	4,365
	Amount	19,384,374	1,661,970	4,270,982	1,593,627	26,910,953

* Totals are compiled based on the home campuses (in principle, the affiliation of the research project leaders). The actual research, however, may take place at different campuses.

* University funds are excluded.

Direct and Indirect Research Expenses FY2019-2023

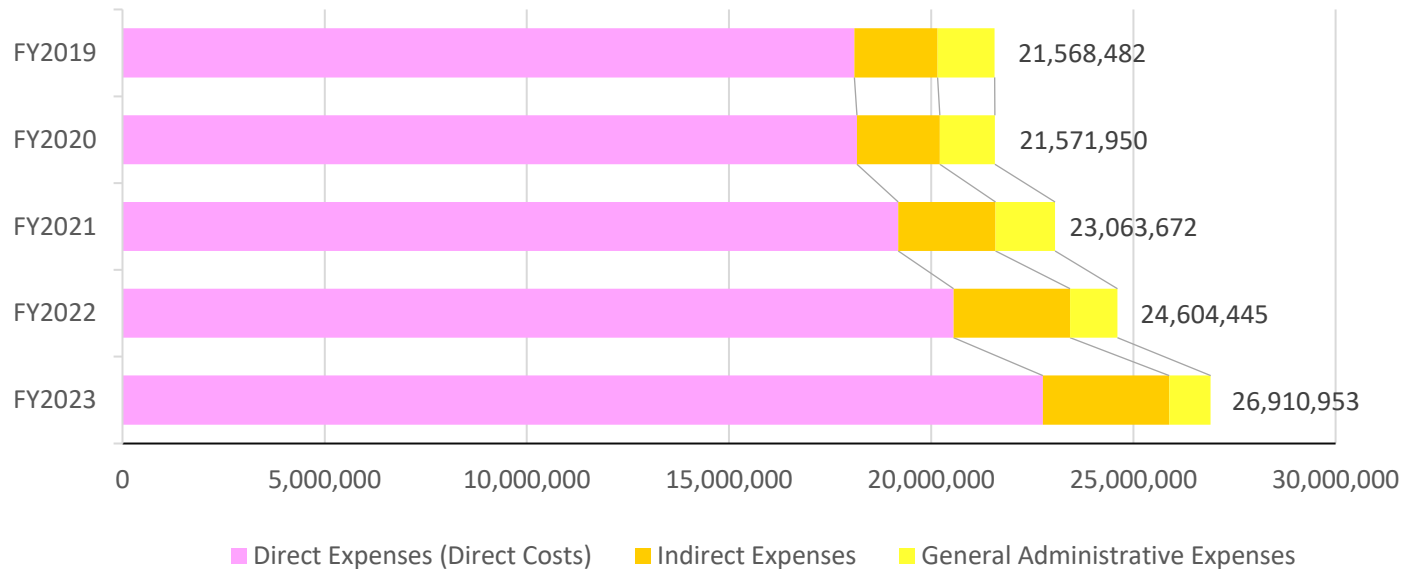
As of March 31, 2024

Direct and Indirect Research Expenses, and General Administrative Expenses over the Past 5 Years

In thousands of yen

Type of Research Funds	FY2019	FY2020	FY2021	FY2022	FY2023
Direct Expenses (Direct Costs)	18,099,719	18,164,535	19,187,949	20,554,169	22,760,667
Indirect Expenses	2,058,030	2,048,699	2,400,589	2,878,721	3,124,130
General Administrative Expenses	1,410,733	1,358,716	1,475,134	1,171,555	1,026,156
Total	21,568,482	21,571,950	23,063,672	24,604,445	26,910,953

* Discrepancies may arise in the total amount as totals are rounded to the thousand.
 * University funds are excluded.



Definition

Indirect Expenses: Expenses allocated equivalent to a certain percentage of the Competitive Research Funds in addition to the direct expenses for the research to supplement administrative and operational costs of the institution to which project leaders are affiliated.

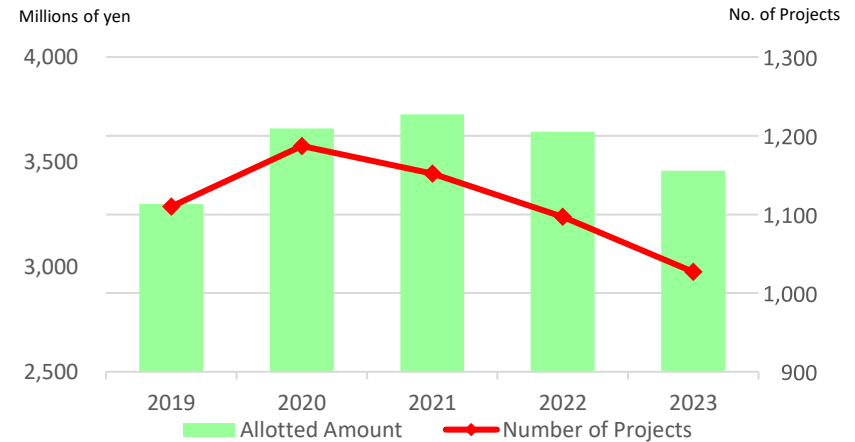
General Administrative Expenses (Overhead Costs): Expenses allocated to supplement administrative costs for research other than direct expenses for the research, other than Indirect Expenses.

■ Institution by Number of Projects (FY2023)

Rank	Name of Organization	No. of Projects	In millions of yen
			Amount
1	The University of Tokyo	3,948	20,851
2	Kyoto University	2,933	13,701
3	Osaka University	2,579	10,239
4	Tohoku University	2,325	9,999
5	Kyushu University	1,994	7,264
6	Nagoya University	1,712	7,556
7	Hokkaido University	1,687	6,052
8	University of Tsukuba	1,363	4,421
9	Hiroshima University	1,193	2,891
10	Kobe University	1,117	2,859
11	Okayama University	1,064	2,815
12	Keio University	1,027	3,459
13	Waseda University	1,022	2,626
14	Kanazawa University	950	2,426
15	Osaka Metropolitan University	920	2,202
16	Chiba University	908	2,508
17	Tokyo Institute of Technology	843	4,071
18	Juntendo University	770	1,652
19	RIKEN	761	4,441
20	Niigata University	755	1,654
⋮	⋮	⋮	⋮
Amount Awarded to all organizations			216,718

■ Number of Projects and Total Funding at Keio University (over the Past 5 years)

Fiscal Year	Rank	Number of Projects	In millions of yen	
			Allotted Amount	Total funds awarded to all organizations
2019	11	1,110	3,300	215,411
2020	10	1,187	3,660	220,370
2021	11	1,152	3,726	221,293
2022	11	1,097	3,645	221,187
2023	12	1,027	3,459	216,718



*Source: MEXT website

https://www.mext.go.jp/a_menu/shinkou/hojyo/1422129_00005.htm

*Allotted amount includes direct and indirect expenses.

*Discrepancies may arise in the total amount as totals are rounded to the million.

*This classification by the affiliation of only the project leaders, and thereby does not necessarily show the actual status of all the project members in their own affiliations.

■ Number of Researchers

Campuses	Tenured/ Semi-tenured Researchers	Project Researchers (Non-tenured)	Researchers (Non-tenured)
Mita Campus	416	55	13
Hiyoshi Campus	341	23	18
Shinanomachi Campus	537	155	141
Yagami Campus	261	40	24
Shonan Fujisawa Campus	178	49	12
Shiba-Kyoritsu Campus	65	7	3
Total	1,798	329	211

■ Development of Future Researchers

Graduate Schools	No. of Doctorates Conferred		No. of Students Enrolled in Doctoral Courses	
	Course Doctorates	Dissertation Doctorates	Maximum Occupancy	No. of Students Enrolled
Graduate School of Letters	3	3	135	99
Graduate School of Economics	4	1	45	35
Graduate School of Law	5	4	90	56
Graduate School of Human Relations	1	1	33	39
Graduate School of Business and Commerce	2	2	60	12
Graduate School of Medicine	66	39	320	372
Graduate School of Science and Technology	58	0	450	300
Graduate School of Business Administration	0	0	24	11
Graduate School of Media and Governance	27	1	150	226
Graduate School of Health Management	4	1	30	58
Graduate School of System Design and Management	7	1	33	57
Graduate School of Media Design	5	0	30	64
Graduate School of Pharmaceutical Sciences	18	0	29	71
Subtotal	200	53	1,429	1,400
Total		253		

Number of JSPS Research Fellows at Keio University

■ Research Fellows by Affiliation

Faculties, Graduate Schools, Research Institutions	FY2019	FY2020	FY2021	FY2022	FY2023
Faculty/Graduate School of Letters, Graduate School of Human Relations	20	24	23	26	17
Faculty/Graduate School of Economics	4	7	6	3	5
Faculty/Graduate School of Law	11	5	12	13	8
Faculty/Graduate School of Business and Commerce	3	2	1	0	2
Faculty/Graduate School of Medicine	30	27	32	39	37
Faculty/Graduate School of Science and Technology	63	57	49	48	40
Faculty of Policy Management, Faculty of Environment and Information Studies, Graduate School of Media and Governance	13	18	18	22	16
Faculty of Nursing and Medical Care, Graduate School of Health Management	0	0	0	0	1
Faculty of Pharmacy, Graduate School of Pharmaceutical Sciences	3	0	1	3	8
Graduate School of Business Administration	1	1	0	0	0
Graduate School of System Design and Management	1	1	1	0	0
Graduate School of Media Design	0	0	0	0	0
Law School	0	0	0	0	1
Affiliated Research Institutes	3	4	6	5	1
Total	152	146	149	159	136

■ Number of JSPS Research Fellow by Category

Category	FY2019	FY2020	FY2021	FY2022	FY2023
DC1	49	58	54	54	55
DC2	48	39	48	50	45
PD	36	32	34	35	23
SPD	1	1	-	-	-
RPD	3	4	4	11	9
CPD	1	2	1	1	1
Foreign Researchers	14	10	8	8	3
Total	150	152	149	159	136

*The "Research Fellowship for Young Researchers" program is divided into 5 categories, DC, PD, SPD, RPD, and CPD. Graduate and doctoral students are mainly accepted, with periods of acceptance differing according to category.

<http://www.jsps.go.jp/english/e-pd/index.html>

*The "Postdoctoral Fellowship for Foreign Researchers" program is also available for overseas young researchers for providing them an opportunity to work together under the guidance of Japanese researchers in Japanese universities, etc.

<http://www.jsps.go.jp/english/e-fellow/index.html>

Researchers from Outside Keio

■ Number of Researchers Accepted — Breakdown by Job Title and Status

Job Titels, Status	Number of Researchers	Qualification
School of Medicine Researchers	392	Researchers employed by research, educational, or medical institutions other than the School of Medicine.
Research Associates of Faculty of Science and Technology	15	Researchers participating in research without a contract for commissioned research.
Researchers of KLL, Keio Leadingedge Laboratory of Science and Technology	38	Researchers participating in research under a commissioned research contract.
Distinguished Researcher, Keio Research Institute at SFC	3	A Distinguished Researcher is one who is recognized to be beneficial to the progress of research activities of the Institute and whose Faculty Sponsor is the Executive Director of the Institute. A Distinguished Researcher must have outstanding research achievements and research management results both in the home country and abroad, and be internationally and widely active.
Senior Researchers, Keio Research Institute at SFC	433	Senior Researchers are regarded as researchers who are accepted by Keio Research Institute at SFC upon recommendation by a Faculty Sponsor and then participate in research activities. A 'Senior Researcher' must possess a Master's degree or equivalent/higher degree, and also be recognized as an experienced, distinguished, and self-sustained researcher.
Researchers, Keio Research Institute at SFC	179	Researchers are regarded as researchers who are accepted by Keio Research Institute at SFC upon recommendation by a Faculty Sponsor and then participate in research activities. A 'Researcher' must possess a Bachelor's degree or equivalent/higher degree, and be recognized as an experienced and distinguished researcher.
Research Associates, Faculty of Pharmacy	56	Researchers who work alongside faculty members of Keio University's Faculty of Pharmacy, using its facilities and/or equipment.
Guest Senior Project Researcher, Shin-Kawasaki Town Campus	6	Researchers who are accepted by Keio Frontier Research & Education Collaborative Square at Shin-Kawasaki Town Campus (K2) for the purpose of participating in research projects established in K2, who are employed outside of Keio University, and who have a career equivalent to that of a university professor.
Guest Project Researcher, Shin-Kawasaki Town Campus	8	Researchers who are accepted by Keio Frontier Research & Education Collaborative Square at Shin-Kawasaki Town Campus (K2) for the purpose of participating in research projects established in K2, and who are employed outside of Keio University.
IAB Member researcher at the Institute for Advanced Biosciences	34	Researchers who are accepted by the IAB to participate in its research activities, at the request of either an institution outside of Keio or the individual themselves.
Researchers, Center for Wellbeing Research	1	Researchers invited from domestic or foreign companies, research and educational institutions, or similar enterprises for the purpose of participating in research and educational activities at the Center for Wellbeing Research. Or researchers who are enrolled in a Ph.D. program at a graduate school.
Visiting Professors and Researchers (See Table A)	682	
Others (See Table B)	1,893	
Total	3,740	

■ **Table A : Number of Visiting Professors and Researchers**

Job Titles, Status	Mita/Hiyoshi	Shinanomachi	Yagami	Shonan Fujisawa	Shiba-Kyoritsu	Total
Visiting Professors	53	47	25	10	1	136
Visiting Associate Professors	31	19	20	9	1	80
Visiting Assistant Professors	18	12	5	12	0	47
Visiting Instructors	6	19	22	0	4	51
Visiting Research Fellows	90	176	57	7	5	335
Visiting Junior Research Fellows	14	16	3	0	0	33
Total	212	289	132	38	11	682

■ **Table B : Others**

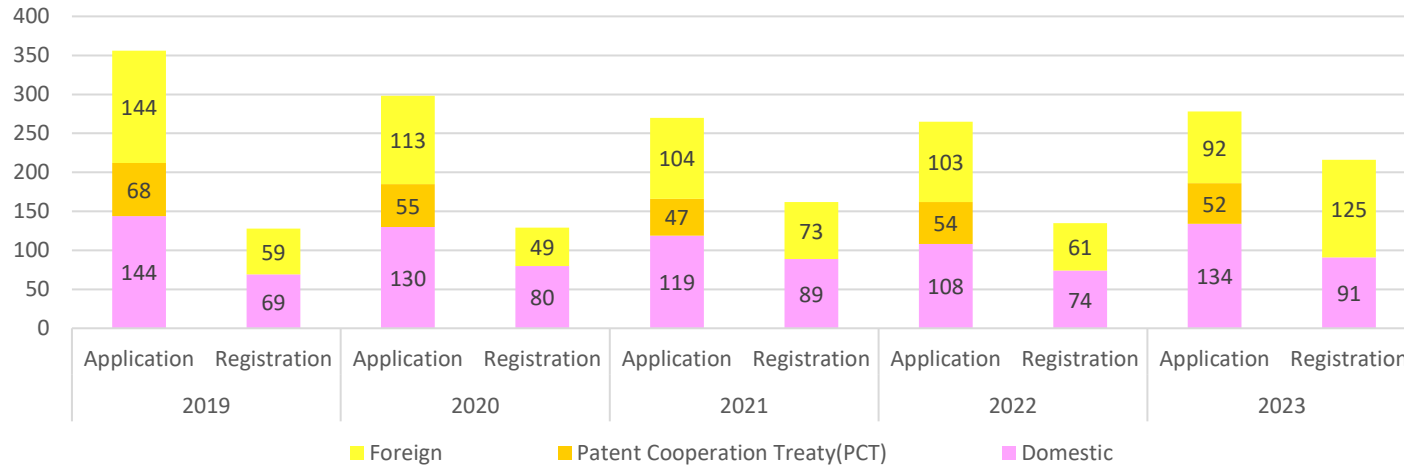
Campuses	Research Institute	* No. of Researchers at Keio University	No. of Researchers from Outside Keio	Total
Mita	Keio University Art Center	31	29	60
	Teacher Training Center	54	61	115
	Global Security Research Institute	393	215	608
	Institute for Economic Studies	81	70	151
	The Keio Institute of Cultural and Linguistic Studies	24	99	123
	International Center	8	16	24
	Keio Economic Observatory	43	78	121
	Institute of Oriental Classics (Shido Bunko)	14	1	15
	Center for Japanese Studies	10	35	45
	Keio Institute of East Asian Studies	27	28	55
Hiyoshi	Fukuzawa Memorial Center for Modern Japanese Studies	20	51	71
	Institute for Journalism, Media and Communications Studies	12	30	42
	Research Institute for Digital Media and Content (DMC)	11	0	11
	Institute of Physical Education	19	2	21
	Health Center	19	0	19
	Keio Research Center for Foreign Language Education	39	1	40
	Sports Medicine Research Center	7	40	47
	Keio Research Center for the Liberal Arts	188	0	188
	Research and Education Center for Natural Sciences	69	68	137
	Total		1069	824

Researchers at Keio University: the figure indicates the total number of researchers including teachers in the affiliated elementary and secondary schools of Keio, in addition to tenured and non-tenured researchers of undergraduate faculties/graduate schools or research institutes.

A researcher affiliated to more than two institutions is counted as one researcher of each.

Table B was revalued in 2020 and included the number of researchers who were not counted in the previous years.

Number of Patent Applications and Registrations



* The number of patent applications include national phase applications that have been transferred from PCT applications, but except applications that have been transferred to the priority country.

Number of Income-generating Licenses and Income Amounts, Number of New Licensing Agreements

