

# Keio University Research Related Data 2016

## Research Funds at Keio University in FY2016

Research funds at Keio University from national and local public institutions, private businesses, and university funding totaled approximately ¥20.2 billion in FY2016. The charts below show research fund totals classified in various ways.

### Research Funds by Type

In Thousand of yen

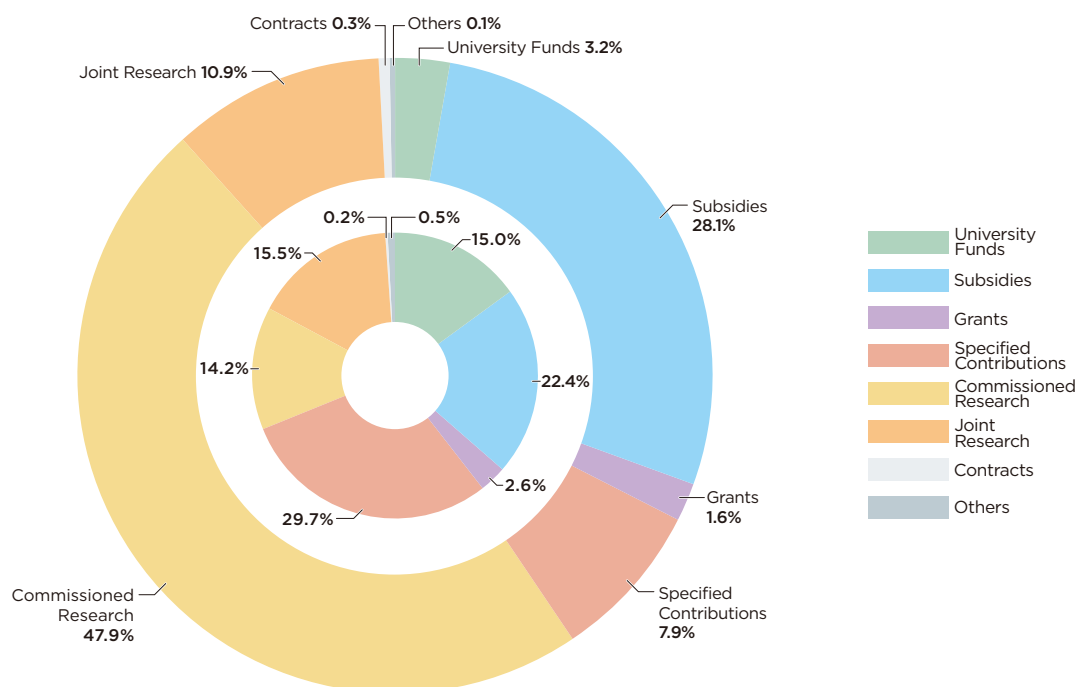
Types of Funds	Number of Projects	Amount
University Funds	758	655,664
Subsidies	1,133	5,698,944
Grants	132	321,588
Specified Contributions	1,502	1,611,058
Commissioned Research	717	9,717,150
Joint Research	785	2,212,052
Contracts	11	55,197
Others	25	18,033
<b>Total</b>	<b>5,063</b>	<b>20,289,687</b>

\*As of April 30, 2017

\*Discrepancies may arise in the total amount as totals are rounded to the thousand and some numbers are rounded up after the decimal point.

### Research Funding Share by Amount

(Amount (outer ring), Number of Projects (inner ring))



### Definition

**Subsidies:** Research funds provided mainly by government and public offices.

**Grants:** Research expenses provided mainly by foundations for the purpose of improvement or accomplishment of research.

**Specified Contributions:** Contributions earmarked for research activities.

**Commissioned Research:** Research commissioned by government and public offices, as well as private enterprises.

**Joint Research:** Research involving personnel exchanges and/or sharing technology/facilities under the joint research agreement, with or without payment of research funds.

**Contracts:** Research under a contract agreement.

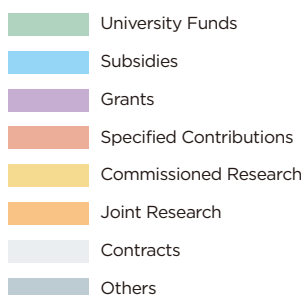
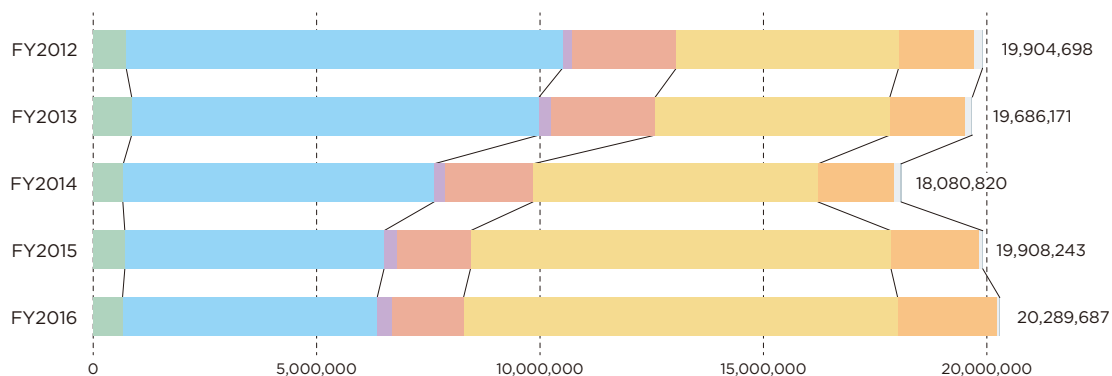
# Keio University Research Related Data 2016

## Research Funds at Keio University in FY2016

### Research Funds by Type over the Past 5 Years

In Thousand of yen

Type of Research Funds	FY2012	FY2013	FY2014	FY2015	FY2016
University Funds	738,346	860,904	663,395	707,742	655,664
Subsidies	9,763,445	9,119,344	6,962,589	5,801,174	5,698,944
Grants	207,494	258,258	229,778	282,144	321,588
Specified Contributions	2,339,510	2,341,052	1,984,715	1,652,386	1,611,058
Commissioned Research	4,975,567	5,250,453	6,381,821	9,411,581	9,717,150
Joint Research	1,685,163	1,662,960	1,687,830	1,958,411	2,212,052
Contracts	177,469	143,172	143,547	71,212	55,197
Others	17,703	40,028	27,145	23,593	18,033
<b>Total</b>	<b>19,904,698</b>	<b>19,676,171</b>	<b>18,080,820</b>	<b>19,908,243</b>	<b>20,289,687</b>



# Keio University Research Related Data 2016

## Research Funds at Keio University in FY2016

The data in this section are compiled with reference to classification of the field of research in other official reports such as the Survey of Research and Development by the Ministry of Internal Affairs and Communications, and various surveys on research expenses by the Japan Association of Private Universities and Colleges.

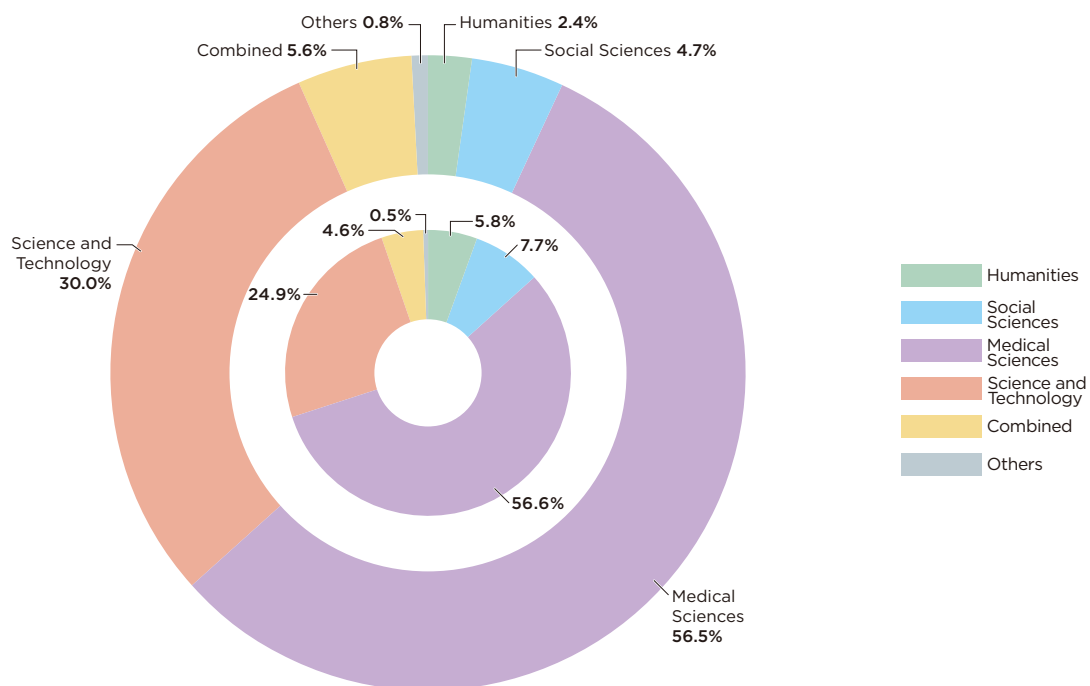
### Research Funds by Field

In Thousand of yen

Research Fields	Number of Projects	Amount
Humanities	292	488,741
Social Sciences	391	961,902
Medical Sciences	2,864	11,463,896
Science and Technology	1,260	6,077,635
Combined	232	1,133,860
Others	24	163,653
<b>Total</b>	<b>5,063</b>	<b>20,289,687</b>

### Research Funding Share by Field

(Amount (outer ring), Number of Projects (inner ring))



# Keio University Research Related Data 2016

## Research Funds at Keio University in FY2016

Funds classified by affiliation of researchers (in principle, the project leaders)

### Research Funds by Affiliation of Researchers

In Thousand of yen

Affiliation of Researchers	Number of Projects	Amount
Faculty/Graduate School of Letters	154	317,986
Faculty/Graduate School of Economics	119	308,554
Faculty/Graduate School of Law	75	128,555
Faculty/Graduate School of Business and Commerce	96	199,832
Faculty/Graduate School of Medicine	2,642	10,888,083
Faculty/Graduate School of Science and Technology	966	4,022,373
Faculty of Policy Management	126	248,035
Faculty of Environment and Information Studies	301	2,240,445
Faculty of Nursing and Medical Care	40	49,418
Faculty of Pharmacy/ Graduate School of Pharmaceutical Sciences	131	344,211
Graduate School of Human Relations	0	0
Graduate School of Media and Governance	104	334,477
Graduate School of Health Management	2	13,000
Graduate School of Business Administration	40	71,316
Graduate School of System Design and Management	72	339,275
Graduate School of Media Design	49	246,877
Keio Law School	41	39,584
Other	107	497,667
<b>Total</b>	<b>5,063</b>	<b>20,289,687</b>

# Keio University Research Related Data 2016

## Research Funds at Keio University in FY2016

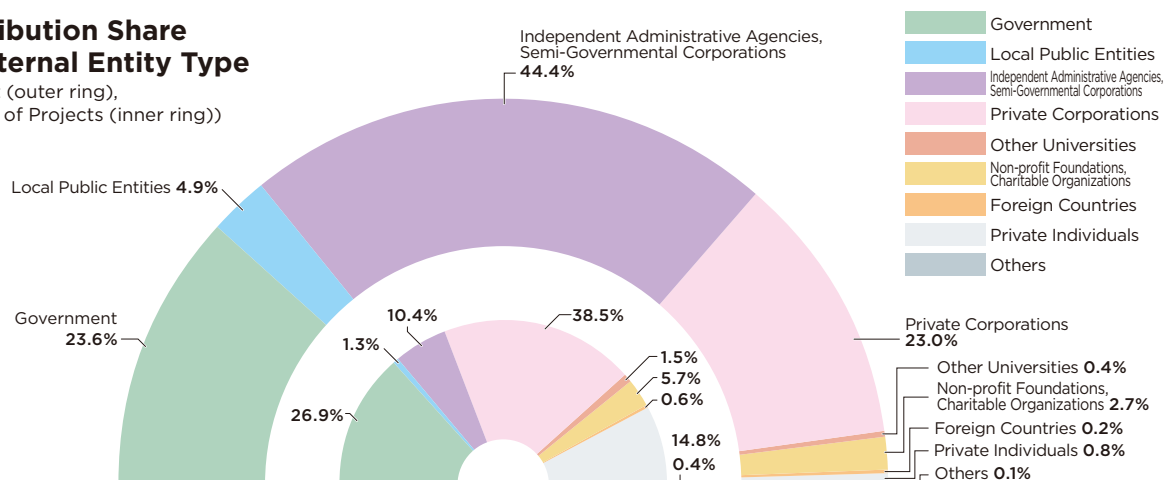
### Types of External Entities Contributing Research Funds

In Thousand of yen

Type of External Entities	Number of Projects	Amount
Government *1	1,157	4,631,640
Local Public Entities	55	960,633
Independent Administrative Agencies, Semi-Governmental Corporations *2	446	8,718,197
Private Corporations *3	1,659	4,506,562
Other Universities	66	79,209
Non-profit Foundations, Charitable Organizations	245	523,354
Foreign Countries	25	44,301
Private Individuals	635	156,529
Others	17	13,597
<b>Total</b>	<b>4,305</b>	<b>19,634,023</b>

### Contribution Share by External Entity Type

(Amount (outer ring),  
Number of Projects (inner ring))



\*1

Government	FY2012		FY2013		FY2014		FY2015		FY2016	
Ministry	Number of Projects	Amount	Number of Projects	Amount	Number of Projects	Amount	Number of Projects	Amount	Number of Projects	Amount
MIC	8	110,568	14	131,516	13	167,952	9	69,193	10	165,671
MEXT	1,010	6,836,473	1,022	6,360,826	1,050	5,898,298	1,030	4,098,486	1,066	3,970,013
MHLW	170	2,242,363	151	1,236,770	193	1,354,689	75	401,726	61	254,236
MOE	9	208,255	7	188,588	11	170,498	11	211,183	8	146,758
Others	26	571,020	39	1,556,694	36	705,821	41	574,942	12	94,961
<b>Total</b>	<b>1,223</b>	<b>9,968,680</b>	<b>1,233</b>	<b>9,474,395</b>	<b>1,303</b>	<b>8,297,259</b>	<b>1,166</b>	<b>5,355,529</b>	<b>1,157</b>	<b>4,631,640</b>

\*2

Independent Administrative Agencies, Semi-Governmental Corporations	FY2012		FY2013		FY2014		FY2015		FY2016	
Funding Agency	Number of Projects	Amount	Number of Projects	Amount	Number of Projects	Amount	Number of Projects	Amount	Number of Projects	Amount
NICT	12	132,610	12	124,380	14	133,746	19	122,539	20	196,219
JST	89	1,605,682	116	2,942,291	114	2,878,376	81	2,157,171	81	2,729,495
AMED	0	0	0	0	0	0	201	5,590,760	216	5,349,794
NEDO	18	317,984	14	156,157	16	263,915	12	120,609	18	205,277
Others	105	1,408,239	100	284,214	107	286,627	91	185,831	111	237,412
<b>Total</b>	<b>224</b>	<b>3,464,514</b>	<b>242</b>	<b>3,507,041</b>	<b>251</b>	<b>3,562,665</b>	<b>404</b>	<b>8,176,910</b>	<b>446</b>	<b>8,718,197</b>

\*3

Private Corporations	FY2012		FY2013		FY2014		FY2015		FY2016	
Types of Funds	Number of Projects	Amount	Number of Projects	Amount	Number of Projects	Amount	Number of Projects	Amount	Number of Projects	Amount
Specified Contributions	1,027	1,970,242	920	1,798,500	821	1,680,057	795	1,387,825	794	1,321,307
Commissioned Research	140	577,283	169	665,603	211	815,748	224	784,052	222	1,123,295
Joint Research	379	1,536,852	427	1,549,096	488	1,583,352	587	1,855,444	597	2,017,897
Others	13	50,453	17	40,507	14	12,493	64	68,156	46	44,063
<b>Total</b>	<b>1,559</b>	<b>4,134,830</b>	<b>1,533</b>	<b>4,053,706</b>	<b>1,534</b>	<b>4,091,651</b>	<b>1,670</b>	<b>4,095,477</b>	<b>1,659</b>	<b>4,506,562</b>

# Keio University Research Related Data 2016

## Research Funds at Keio University in FY2016

### Types of External Entities Contributing Research Funds to Each Campus

In Thousand of yen

Campus		Government Organizations	Non-Government Public Organizations	Private Corporations	Others	Total
Mita Campus	Number of Projects	160	7	15	3	185
	Amount	787,881	7,760	17,625	18,063	831,329
Hiyoshi Campus	Number of Projects	128	12	104	7	251
	Amount	607,169	44,917	300,129	12,221	964,437
Shinanomachi Campus	Number of Projects	793	167	935	649	2,544
	Amount	7,510,881	298,339	2,854,063	151,117	10,814,400
Yagami Campus	Number of Projects	356	69	321	20	766
	Amount	3,134,399	138,816	474,571	4,056	3,751,843
Shonan Fujisawa Campus	Number of Projects	88	59	232	13	391
	Amount	775,954	290,616	744,181	26,044	1,836,795
Shiba-Kyoritsu Campus	Number of Projects	60	17	17	3	97
	Amount	220,012	42,300	21,888	10,000	294,200
Shin-Kawasaki Town Campus	Number of Projects	3	3	6	0	12
	Amount	91,988	4,224	21,243	0	117,456
Tsuruoka Town Campus	Number of Projects	16	11	30	3	60
	Amount	221,553	722,850	72,862	6,300	1,023,564
Total	Number of Projects	1,603	345	1,659	698	4,305
	Amount	13,349,837	1,549,823	4,506,562	227,801	19,634,023

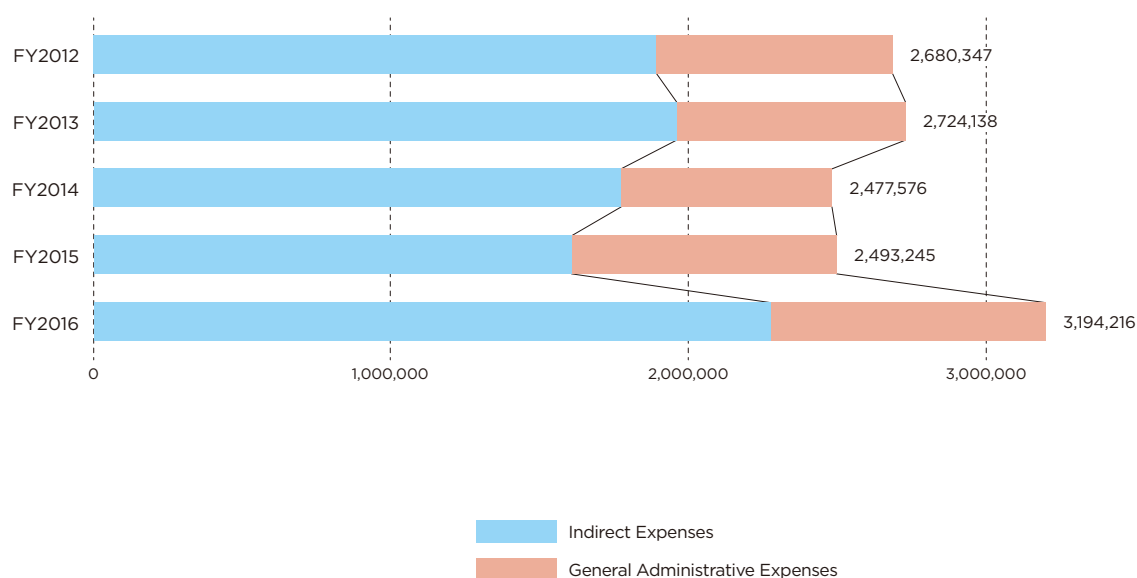
\* Totals are compiled based on the home campuses (in principle, the affiliation of the research project leaders). The actual research, however, may take place at different campuses.

## Research Funds at Keio University in FY2016

### Indirect Research Expenses, and General Administrative Expenses over the Past 5 Years

In Thousand of yen

Type of Research Funds	FY2012	FY2013	FY2014	FY2015	FY2016
Indirect Expenses	1,887,916	1,956,214	1,769,671	1,603,876	2,271,913
General Administrative Expenses	792,431	767,924	707,905	889,369	922,303
Total	2,680,347	2,724,138	2,477,576	2,493,245	3,194,216



#### Definition

**Indirect Expenses:** Expenses allocated equivalent to a certain percentage of the Competitive Research Funds in addition to the direct expenses for the research to supplement administrative and operational costs of the institution to which project leaders are affiliated.

**General Administrative Expenses (Overhead Costs):** Expenses allocated to supplement administrative costs for research other than direct expenses for the research, other than Indirect Expenses.

# Keio University Research Related Data 2016

## Research Funds at Keio University in FY2016

The Grants-in-Aid for Scientific Research (KAKENHI) Program

### Institution by Number of Projects (FY2016)

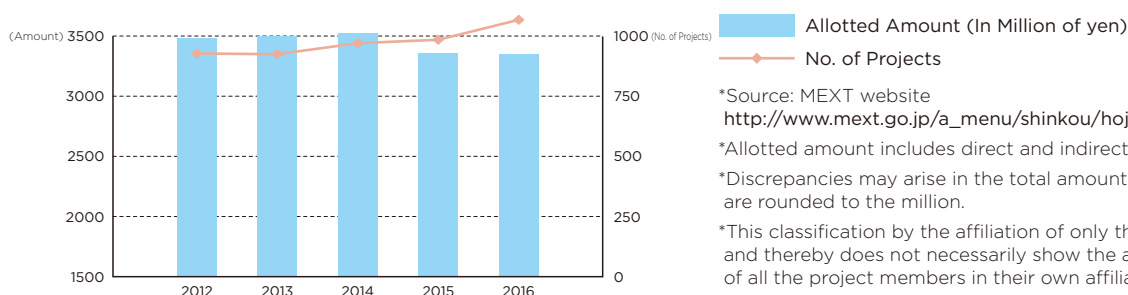
In Million of yen

Rank	Name of Organization	No. of Projects	Amount
1	The University of Tokyo	3,862	21,673
2	Kyoto University	3,050	13,757
3	Osaka University	2,585	10,698
4	Tohoku University	2,510	9,978
5	Kyushu University	1,962	7,159
6	Nagoya University	1,843	7,683
7	Hokkaido University	1,681	5,803
8	University of Tsukuba	1,294	4,073
9	Kobe University	1,107	2,820
10	Hiroshima University	1,075	2,621
11	Keio University	1,028	3,232
12	Waseda University	982	2,726
13	Tokyo Institute of Technology	941	4,550
14	Kanazawa University	876	2,323
15	Chiba University	854	2,269
16	Okayama University	848	2,319
17	Niigata University	787	1,729
18	RIKEN	772	4,063
19	Tokyo Medical and Dental University	655	1,807
20	Kumamoto University	653	1,744
A	Amount Awarded(research money)		209,705
B	Total for Top 10 Organizations		86,265
B/A	(awarded money compared)		42%
C	Total for Top 20 Organizations		113,027
C/A	(awarded money compared)		54%

### Number of Projects Total Funding at Keio University (over the Past 5 Years)

In Million of yen

Fiscal Year	Rank	No. of Projects	Allotted Amount	Total Funds Awarded to All Organizations
2012	11	979	3,465	220,789
2013	11	978	3,495	225,258
2014	11	994	3,542	213,234
2015	11	999	3,248	207,044
2016	11	1,028	3,232	209,705



\*Source: MEXT website  
[http://www.mext.go.jp/a\\_menu/shinkou/hojyo/1377914.htm](http://www.mext.go.jp/a_menu/shinkou/hojyo/1377914.htm)

\*Allotted amount includes direct and indirect expenses.

\*Discrepancies may arise in the total amount as totals are rounded to the million.

\*This classification by the affiliation of only the project leaders, and thereby does not necessarily show the actual status of all the project members in their own affiliations.



# Keio University Research Related Data 2016

## Researchers at Keio University in FY2016

### Number of Researchers

Campus	Tenured/ Semi-tenured Researchers	Project Researchers (Non-tenured)	Researchers (Non-tenured)
Mita Campus	407	11	2
Hiyoshi Campus	335	15	21
Shinanomachi Campus	555	167	146
Yagami Campus	264	35	18
Shonan Fujisawa Campus	176	55	8
Shiba-Kyoritsu Campus	60	1	0
<b>Total</b>	<b>1797</b>	<b>284</b>	<b>195</b>

### Total Number of Researchers at Keio University

Job Titles, Status	FY2012	FY2013	FY2014	FY2015	FY2016
Tenured/ Semi-tenured Researchers	1,776	1,785	1,795	1,801	1,797
Project Researchers (Non-tenured)	299	264	247	266	284
Researchers (Non-tenured)	138	160	171	190	195
<b>Total</b>	<b>2,213</b>	<b>2,209</b>	<b>2,213</b>	<b>2,257</b>	<b>2,276</b>

### Development of Future Researchers

Graduate Schools	No. of Doctorates Conferred		No. of Students Enrolled in Doctoral Courses		
	Course Doctorates	Dissertation Doctorates	Admission Capacity	Maximum Occupancy	No. of Students Enrolled
Graduate School of Letters	5	5	45	135	103
Graduate School of Economics	4	4	15	45	32
Graduate School of Law	5	4	30	90	75
Graduate School of Human Relations	9	0	11	33	40
Graduate School of Business and Commerce	5	1	20	60	20
Graduate School of Medicine	73	46	80	308	397
Graduate School of Science and Technology	62	0	150	450	288
Graduate School of Business Administration	0	0	8	24	1
Graduate School of Media and Governance	31	1	50	150	133
Graduate School of Health Management	4	1	10	30	35
Graduate School of System Design and Management	6	0	11	33	52
Graduate School of Media Design	9	0	10	30	57
Graduate School of Pharmaceutical Sciences	12	0	8	29	49
<b>Subtotal</b>	<b>225</b>	<b>62</b>	<b>448</b>	<b>1,417</b>	<b>1,282</b>
<b>Total</b>		<b>287</b>			

# Keio University Research Related Data 2016

## Researchers at Keio University in FY2016

### Number of JSPS Research Fellows at Keio University

#### Research Fellows by Affiliation

Faculties, Graduate Schools, Research Institutions	FY2014	FY2015	FY2016
Faculty/ Graduate School of Letters, Graduate School of Human Relations	30	23	19
Faculty/ Graduate School of Economics	4	4	10
Faculty/ Graduate School of Law	7	8	5
Faculty/ Graduate School of Business and Commerce	1	3	4
Faculty/ Graduate School of Medicine	32	30	33
Faculty/ Graduate School of Science and Technology	48	48	61
Faculty of Policy Management, Faculty of Environment and Information Studies, Graduate School of Media and Governance	15	15	15
Faculty of Nursing and Medical Care, Graduate School of Health Management	0	0	0
Faculty of Pharmacy/Graduate School of Pharmaceutical Sciences	0	4	7
Graduate School of Business Administration	0	0	0
Graduate School of System Design and Management	1	0	0
Graduate School of Media Design	0	1	1
Law School	0	0	1
Affiliated Research Institutes	1	2	2
<b>Total</b>	<b>139</b>	<b>138</b>	<b>158</b>

#### Number of JSPS Research Fellow by Qualification

Category	FY2014	FY2015	FY2016
DC1	56	59	60
DC2	34	31	42
PD	38	31	35
SPD	1	0	0
RPD	5	6	9
Foreign Researchers	5	11	12
<b>Total</b>	<b>139</b>	<b>138</b>	<b>158</b>

\*The fixed number of JSPS Research Fellows for FY2016: 5,708

\*The "Research Fellowship for Young Researchers" program is divided into 4 categories, DC, PD, RPD, and SPD. Graduate and doctoral students are mainly accepted, with periods of acceptance differing according to category. <http://www.jsps.go.jp/english/e-pd/index.html>

\*The "Postdoctoral Fellowship for Foreign Researchers" program is also available for overseas young researchers for providing them an opportunity to work together under the guidance of Japanese researchers in Japanese universities, etc. <http://www.jsps.go.jp/english/e-fellow/index.html>

# Keio University Research Related Data 2016

## Researchers at Keio University in FY2016

### Researchers from Outside Keio

#### Number of Researchers Accepted - Breakdown by Job Title and Status

Job Titles, Status	No. of Researchers	Qualification
School of Medicine Researchers	359	Researchers employed by research, educational, or medical institutions other than the School of Medicine.
Research Associates of Faculty of Science and Technology	17	Researchers participating in research without a contract for commissioned research.
Researchers of KLL	50	Researchers participating in research under a commissioned research contract.
Distinguished Researcher, Keio Research Institute at SFC	2	A Distinguished Researcher is one who is recognized to be beneficial to the progress of research activities of the Institute and whose Faculty Sponsor is the Executive Director of the Institute. A Distinguished Researcher must have outstanding research achievements and research management results both in the home country and abroad, and be internationally and widely active.
Senior Researchers, Keio Research Institute at SFC	327	Senior Researchers are regarded as researchers who are accepted by Keio Research Institute at SFC upon recommendation by a Faculty Sponsor and then participate in research activities. A 'Senior Researcher' must possess a Master's degree or equivalent/higher degree, and also be recognized as an experienced, distinguished, and self-sustained researcher.
Researchers, Keio Research Institute at SFC	175	Researchers are regarded as researchers who are accepted by Keio Research Institute at SFC upon recommendation by a Faculty Sponsor and then participate in research activities. A 'Researcher' must possess a Bachelor's degree or equivalent/higher degree, and be recognized as an experienced and distinguished researcher.
Research Associates, Faculty of Pharmacy	24	Researchers participating in research without a contract for commissioned research.
Research Associates, KARC	96	External researchers assigned for KARC projects.
Visiting Professors and Researchers (See Table A)	438	
Others (See Table B)	529	
<b>Total</b>	<b>2,017</b>	

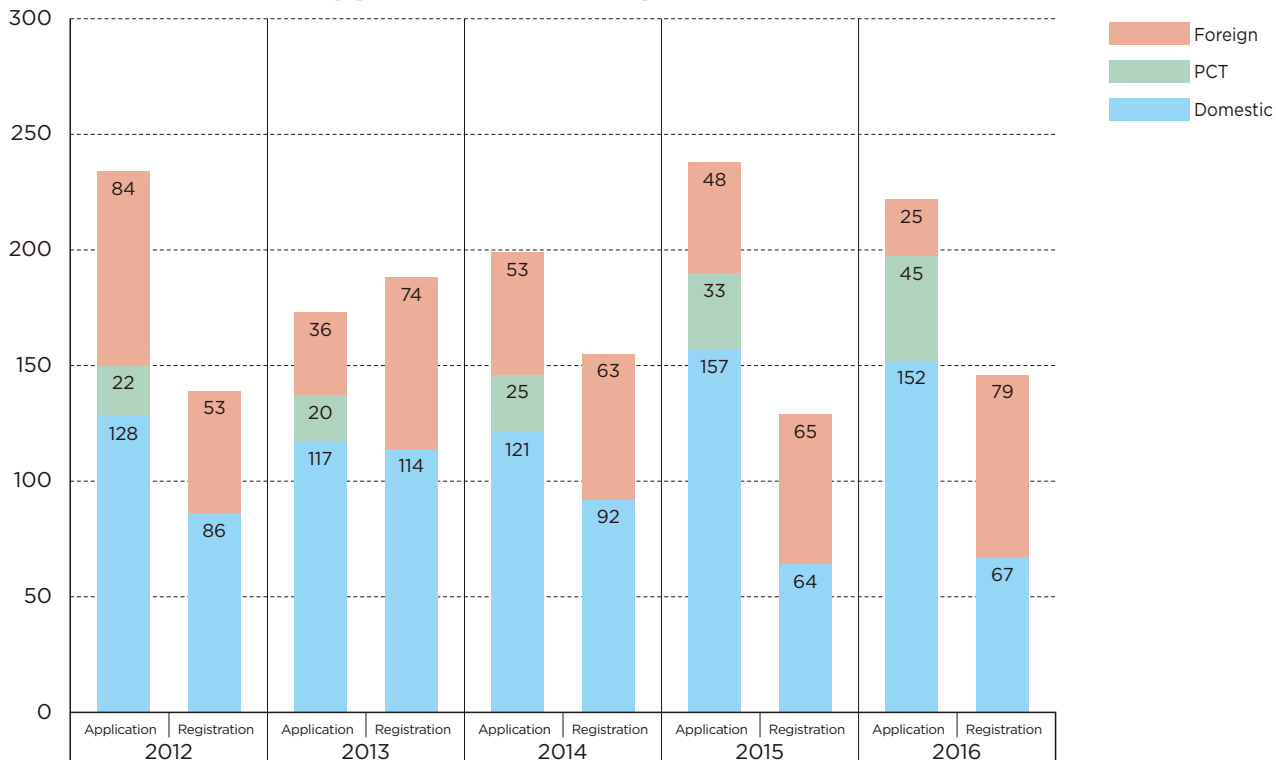
**Table A : Number of Visiting Professors and Researchers**

Job Titles, Status	Mita/Hiyoshi	Shinanomachi	Yagami	Shonan Fujisawa	Shiba-Kyoritsu	Total
Visiting Professors	31	13	21	1	1	67
Visiting Associate Professors	14	14	6	2	0	36
Visiting Assistant Professors	15	5	3	10	0	33
Visiting Instructors	0	4	9	0	0	13
Visiting Research Fellows	69	110	45	11	1	236
Visiting Junior Research Fellows	31	10	11	1	0	53
<b>Total</b>	<b>160</b>	<b>156</b>	<b>95</b>	<b>25</b>	<b>2</b>	<b>438</b>

**Table B : Others**

Campuses	Research Institute	*No. of Researchers at Keio University	*No. of Researchers from Outside Keio	Total	
Mita	Keio University Art Center		24	16	40
	Teacher Training Center		38	48	86
	Global Security Research Institute		14	46	60
	Global Research Institute		52	6	58
	Institute for Economic Studies		13	5	18
	The Keio Institute of Cultural and Linguistic Studies		27	90	117
	International Center		17	33	50
	Keio Economic Observatory		39	62	101
	Institute of Oriental Classics (Shido Bunko)		11	4	15
	Center for Japanese Studies		9	44	53
	Keio Institute of East Asian Studies		19	44	63
	Fukuzawa Memorial Center for Modern Japanese Studies		27	39	66
	Institute for Journalism, Media & Communications Studies (MediaCom)		13	18	31
	Hiyoshi	Research Institute for Digital Media and Content (DMC)		9	0
Institute of Physical Education			19	0	19
Health Center			17	0	17
Keio Research Center for Foreign Language Education			39	1	40
Sports Medicine Research Center			6	19	25
Keio Research Center for the Liberal Arts			203	0	203
Research and Education Center for Natural Sciences			70	54	124
<b>Total</b>		<b>666</b>	<b>529</b>	<b>1,195</b>	

### Number of Patent Applications and Registrations



### Number of Income-generating Licenses and Income Amounts, Number of New Licensing Agreements

